

## User Guide – Trading Keyboard (MT5 - macOS)

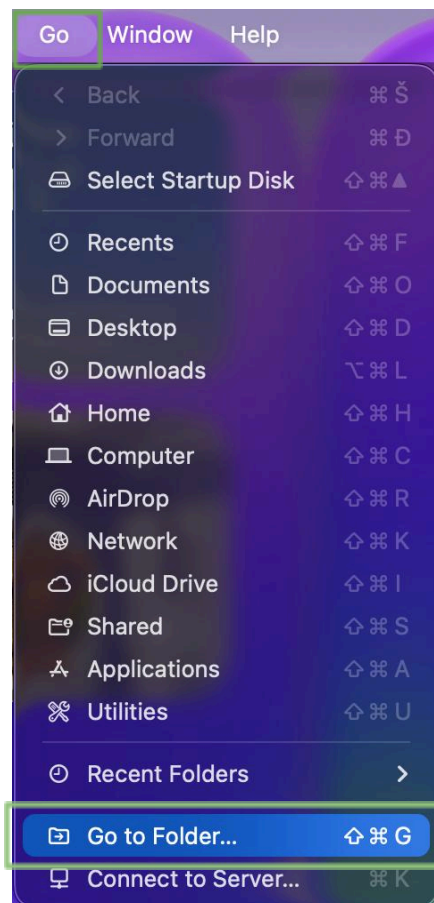
### MT5 SETUP:

#### Step 1: Requirements

1. You must have MetaTrader 5 (MT5) installed

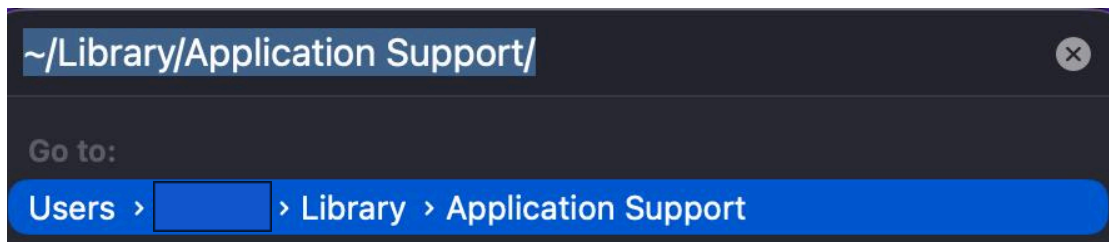
#### Step 2: Activate in MT5

1. Download the **TP\_File** and double click → unzip to folder
2. On your desktop, click on: **GO** → **GO TO FOLDER**



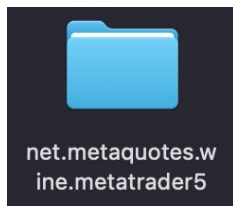
3. In Finder, type:

`~/Library/Application Support/`



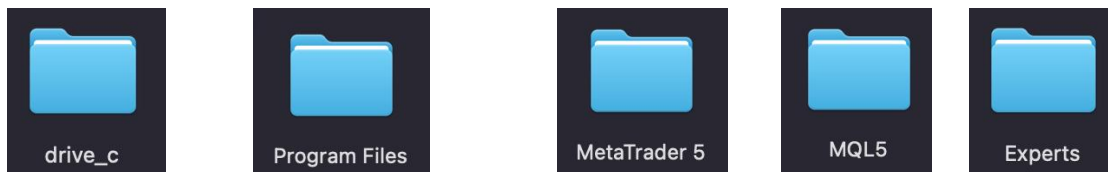
4. Find the folder:

`net.metaquotes.wine.metatrader5`

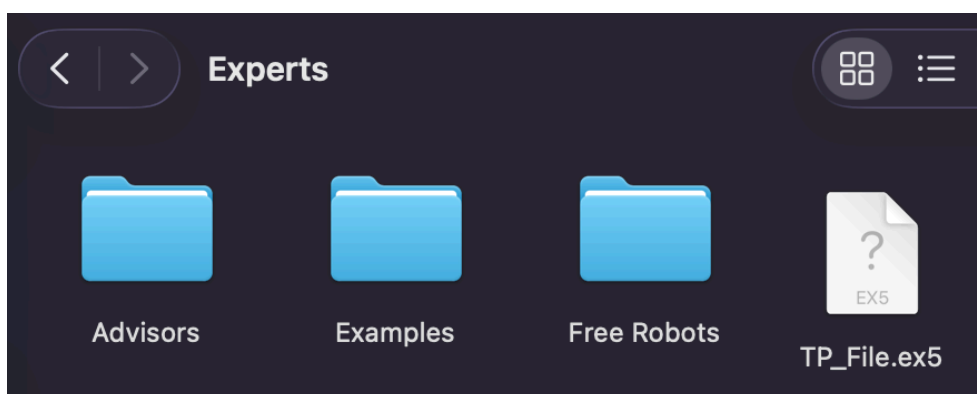


5. Open:

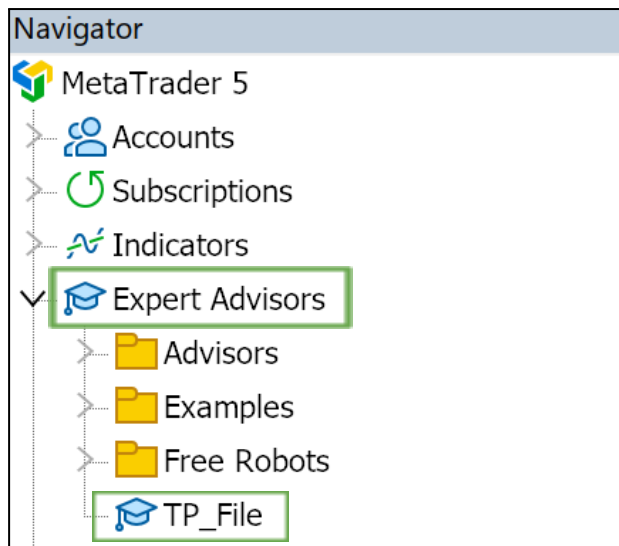
`drive_c → Program Files → MetaTrader5 → MQL5 → Experts`



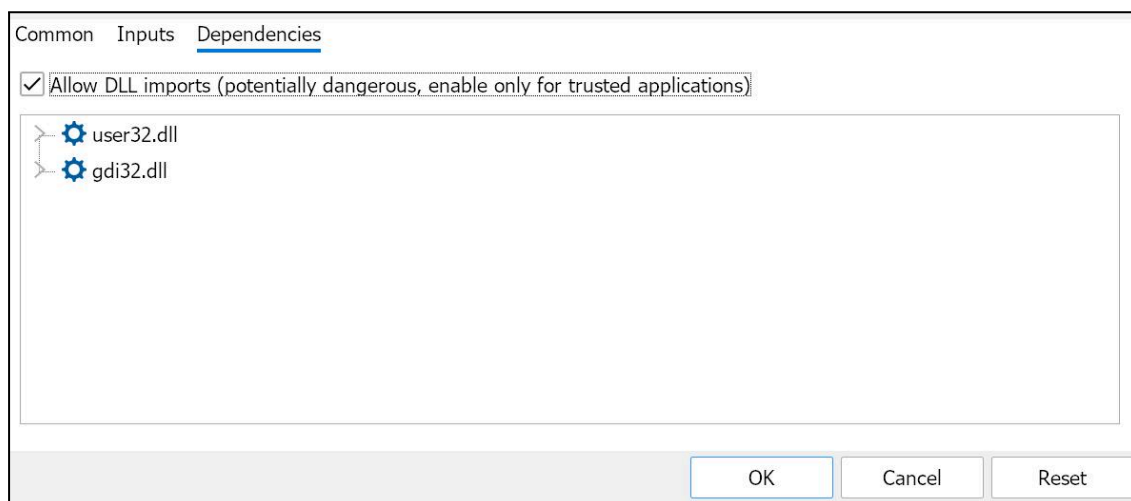
6. Paste the folder **TP\_File** inside the **Experts** folder



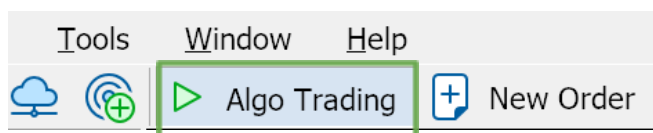
7. Close Finder and open **MT5**
8. On the left side in the Navigator panel, open **Expert Advisors**
9. Drag **TP\_File** onto your chart (if it does not appear, right click and press Refresh)



10. Enable Allow DLL imports and click OK



11. Enable Algo Trading



12. A black square will appear in the top-left corner of the chart.  
Press **F12** to enable or disable the keyboard.



The screenshot shows a dark-themed control panel. At the top left, there is a green square icon followed by the text "ON (F12)". To its right is the word "MARKET" in green. Further right is the label "TP". Below these are four rows of controls: "RISK" with a minus button, a text field containing "0.95", a plus button, and a percentage button; "SL" with a minus button, a text field containing "0.42", a plus button, a percentage button, and a green square icon; "TP" with a minus button, a text field containing "1.05", a plus button, a percentage button, and a green square icon; and "LIMIT" with a minus button, a text field containing "1.34348", and a plus button. Below these rows is a button labeled "CLOSE : All". At the bottom left, the word "READY" is displayed in green. At the bottom right, there is a small icon of a four-pointed star with arrows.

**Note:**

If the panel doesn't load or behaves incorrectly, repeat the setup by dragging the TP\_File onto the chart again and confirming **Allow DLL imports** → **OK**. This usually resolves the issue.

Below you will find instructions on how to use the Control Panel ↓

TP

# HOW TO USE

## Turn the keyboard ON / OFF

Press **F12** to activate or deactivate the keyboard.

## Select order mode

Use the keyboard buttons to switch between **Market** or **Limit** mode.

## Set position sizing

Choose how you want to size your position: **Lot / Risk / Amount (AMT)**

- Adjust values using **+** / **-**
- Or manually enter an exact value (DELETE to erase)
- Or use the keyboard knob to adjust
- **Risk** calculates position size based on your selected % of account balance

## Set SL & TP

Configure Stop Loss and Take Profit using: **Price / Pips / % / Pts**

- **Green** = ON
- **Red** = OFF
- SL and TP can be turned ON or OFF independently

## Set limit price (if using Limit mode)

- Enter price manually
- Or adjust using **+** / **-**
- Or use the keyboard knob to adjust

## Execute the trade

Once everything is set, place the trade using the assigned keyboard buttons.

## Close positions

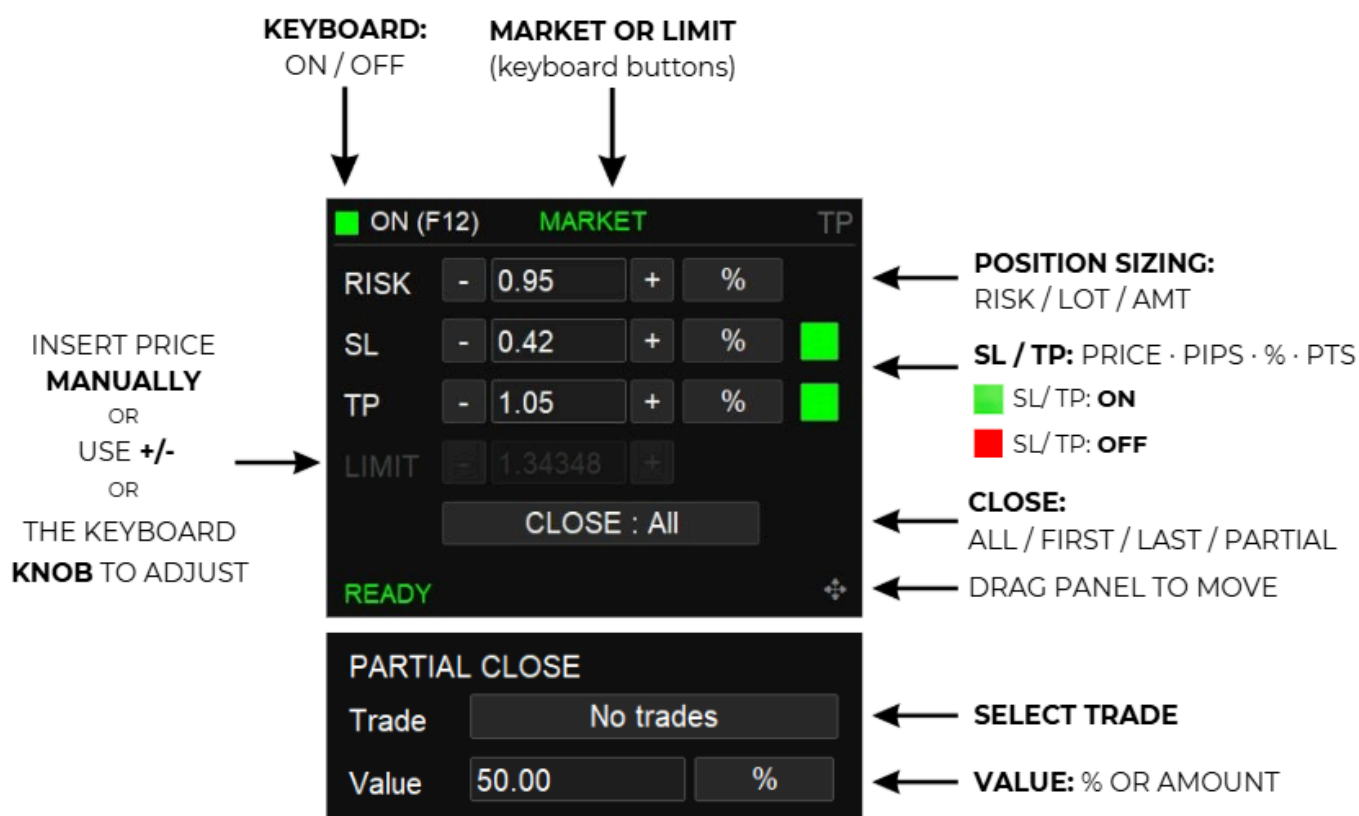
Choose how you want to close trades:

**All / First / Last / Partial**

## Partial close

- Select the trade
- Set value as **% or amount**
- Execute partial close

**Note:** After manually entering any value, confirm it by pressing **ENTER**.



### Safety tip:

To prevent accidental trades, always turn the keyboard **OFF** when it's not in use.

Enjoy using your Trading Keyboard! 😊

TP

## **Disclaimer**

This product is a tool for executing user-defined commands and does not provide trading signals, financial advice, or automated decision-making.

Trading involves risk. Use of this keyboard does not guarantee profits or improved performance. All trading decisions are made solely by the user.

We are not responsible for any financial losses, missed trades, execution errors, or other damages resulting from the use or misuse of this product. Users are responsible for correctly configuring the device and verifying all actions before execution.